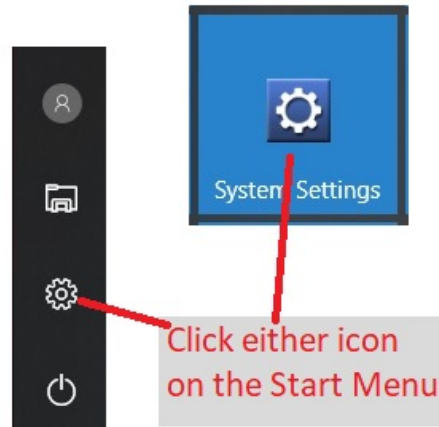
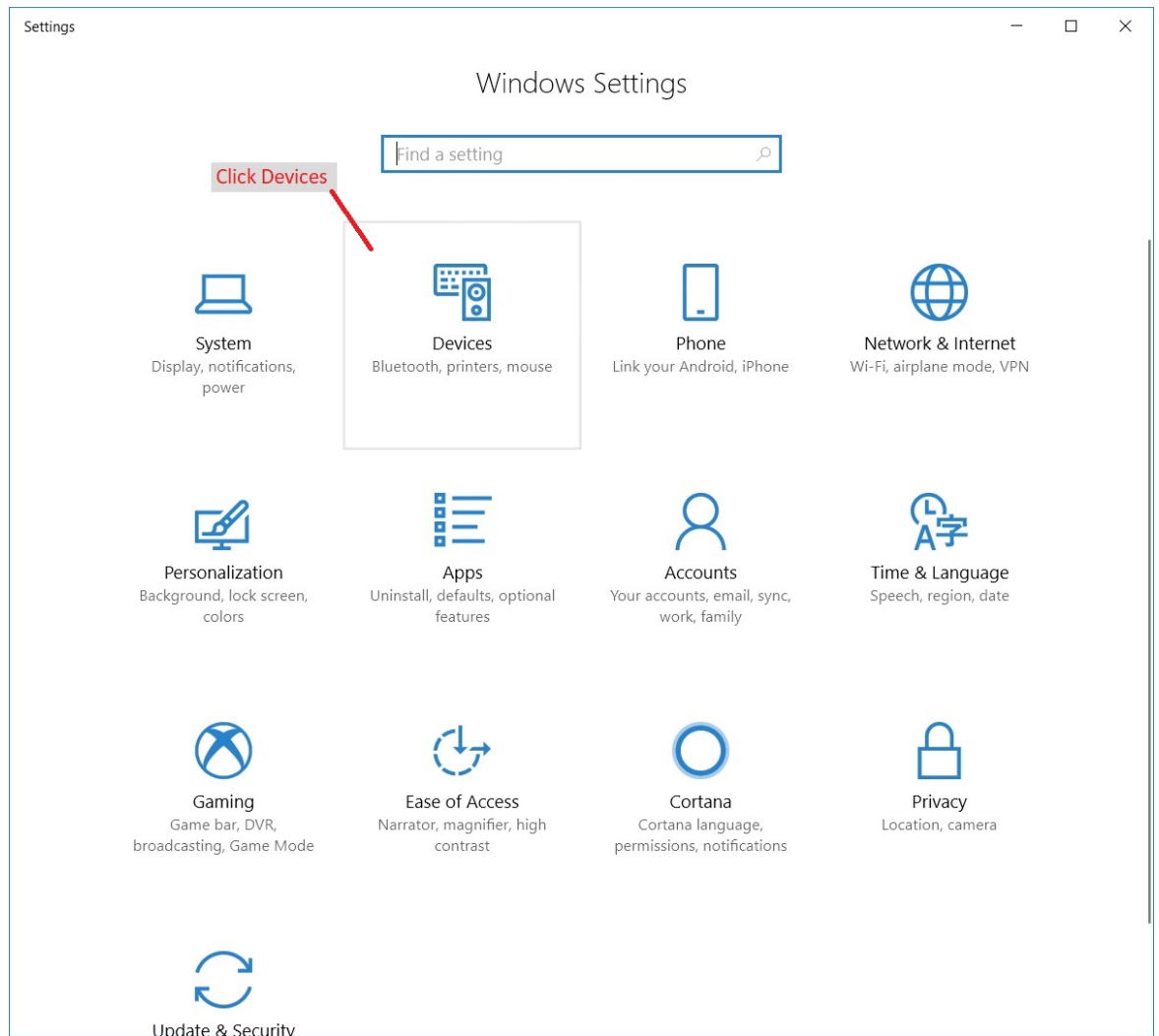


Zebra Label Printer Setup

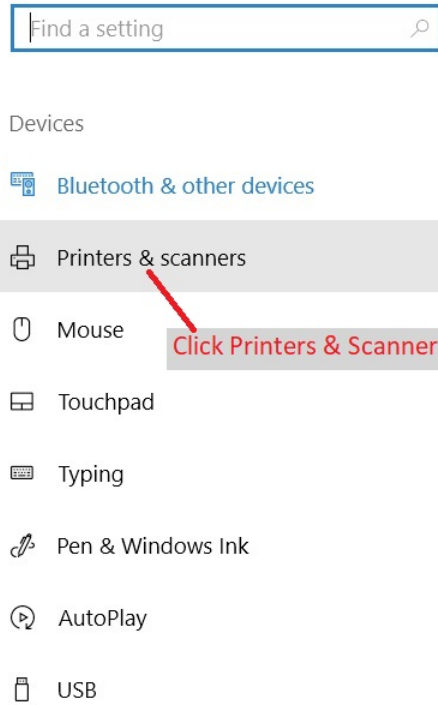
1) Go into your computer's Settings.



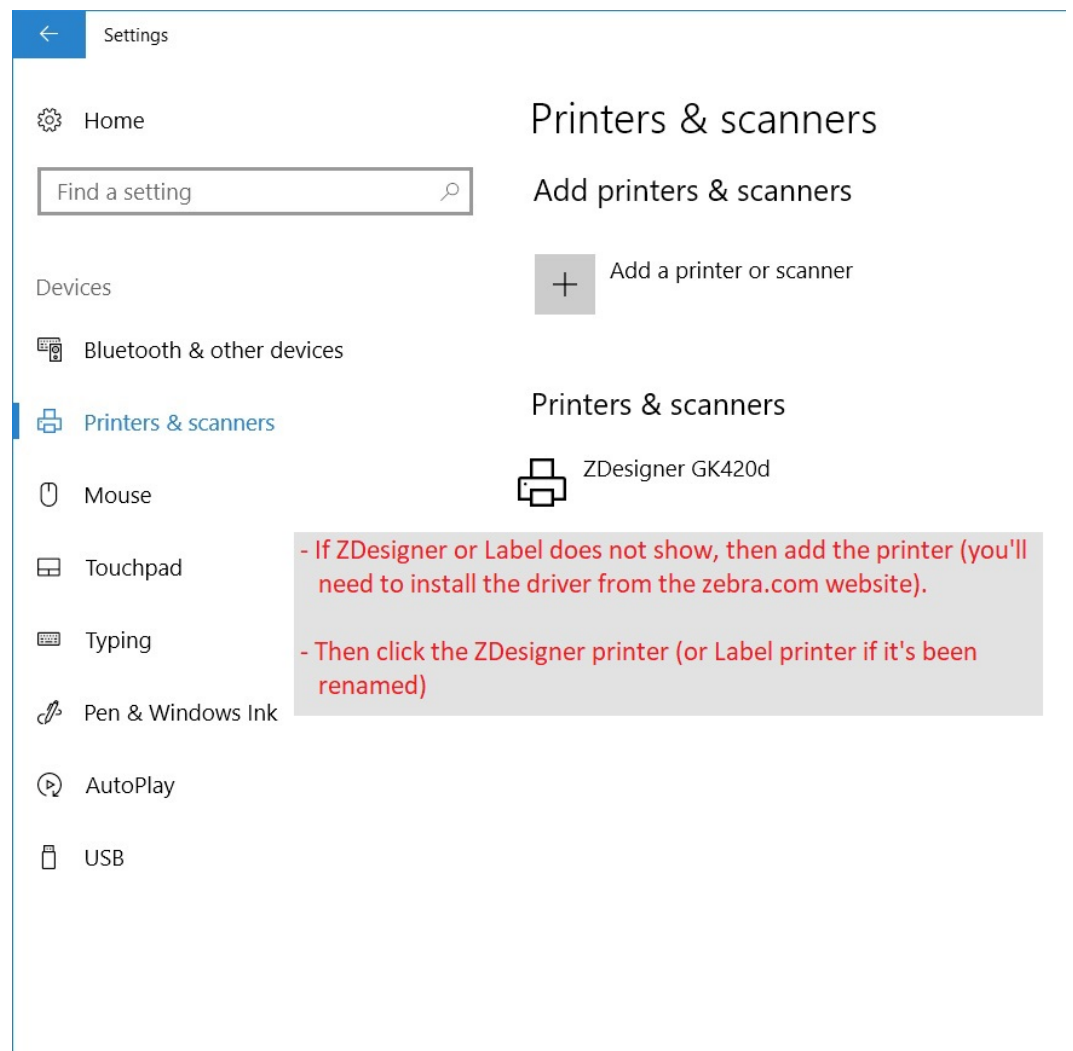
2) Click Devices.



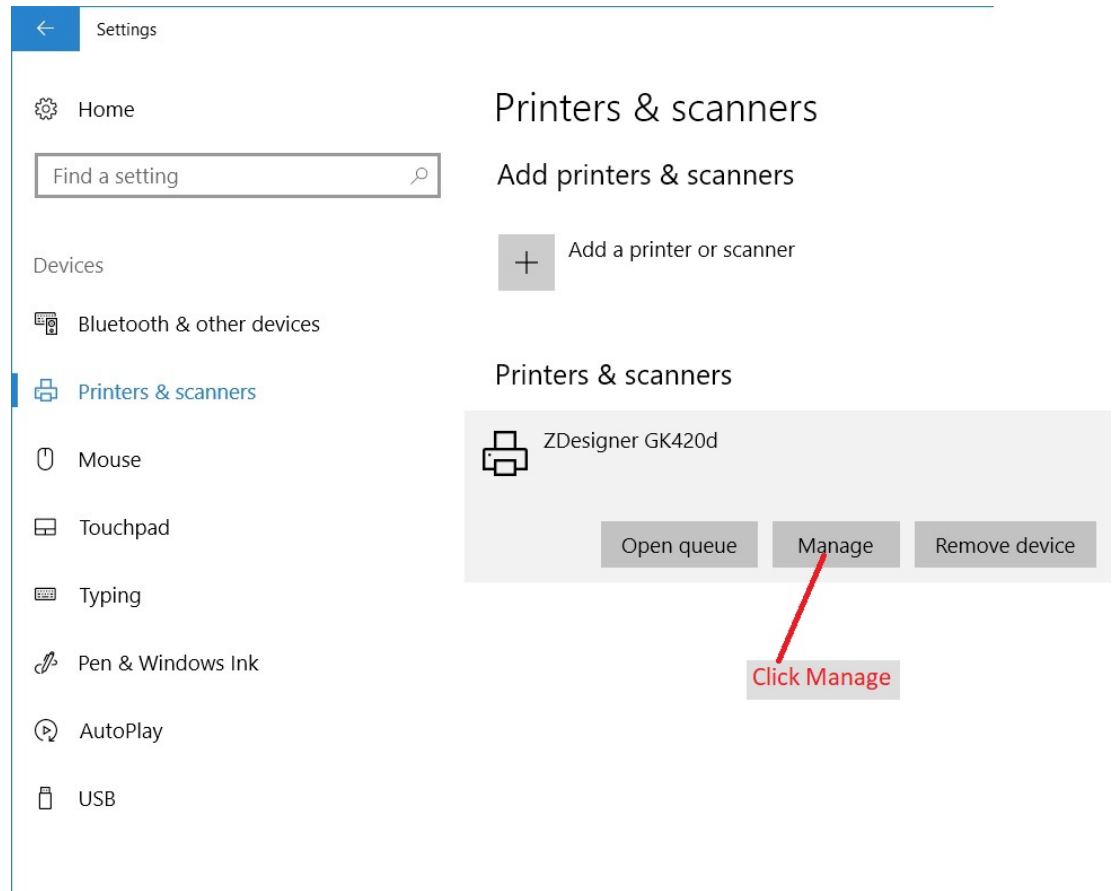
3) Click on Printers & Scanners.



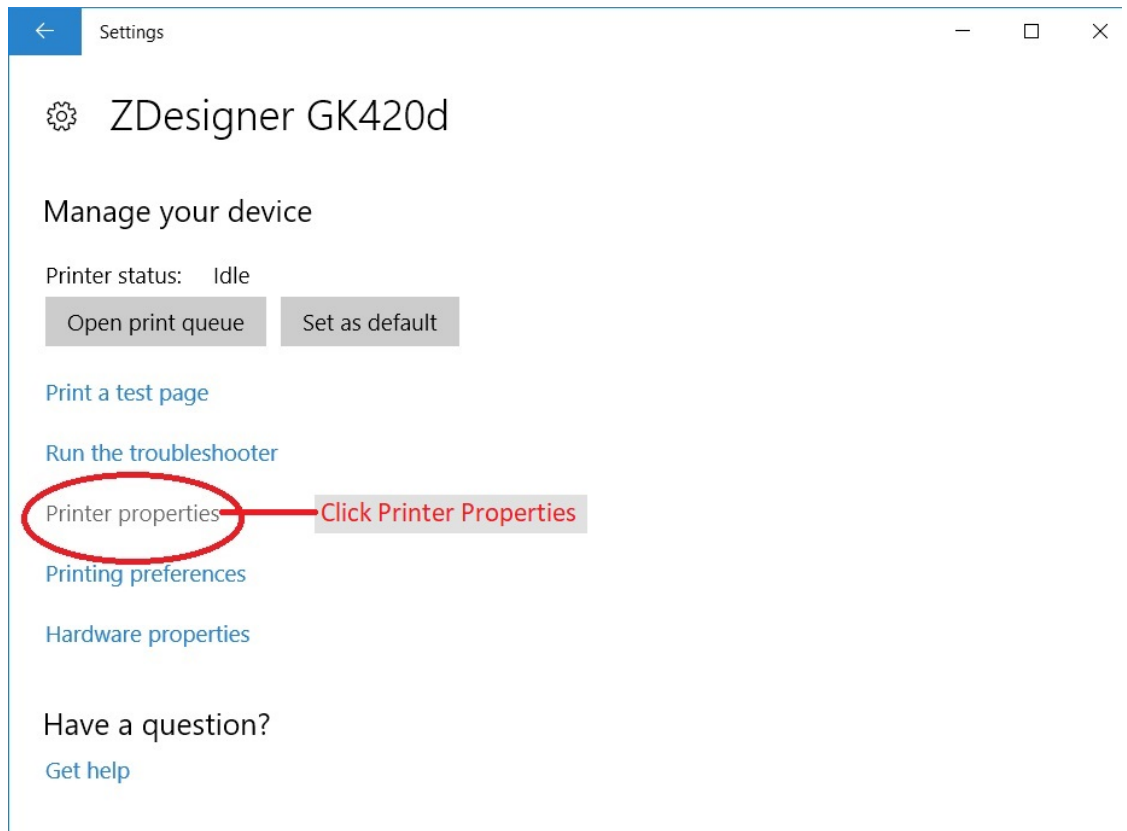
4) Add the printer if it's not there then click the Zebra printer.



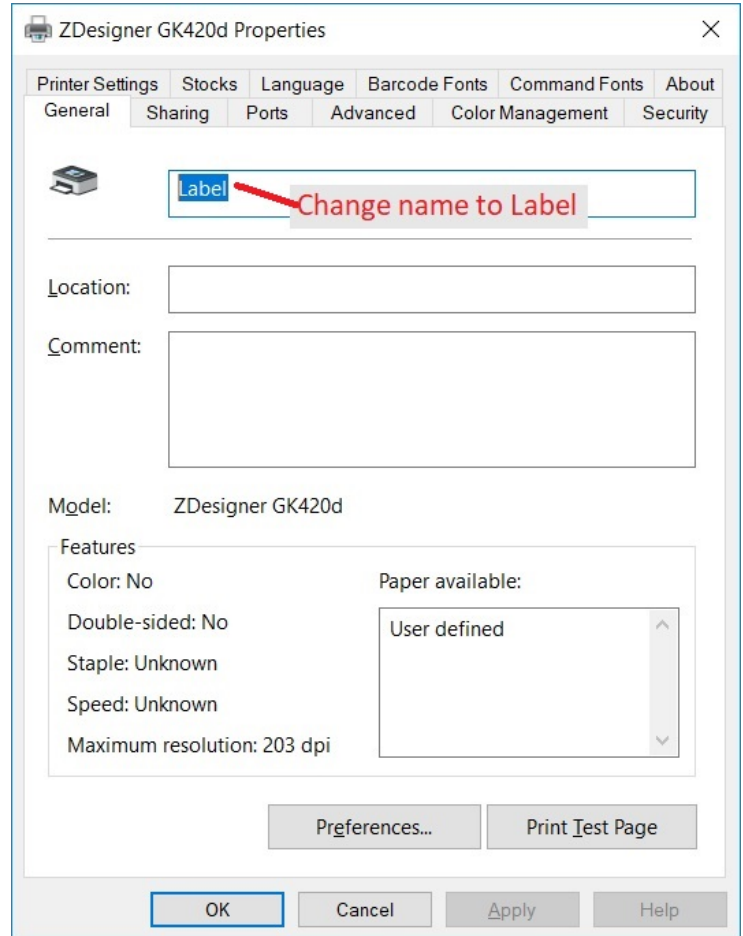
5) Click Manage.



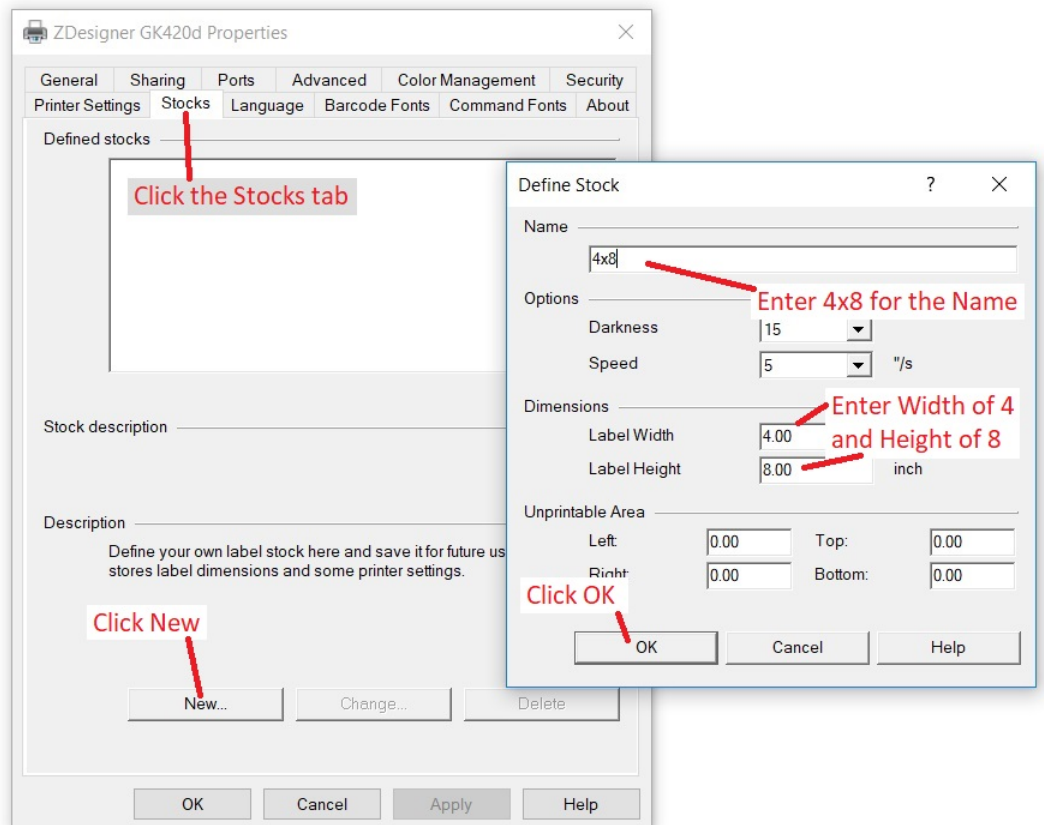
6) Open the Printer Properties window.



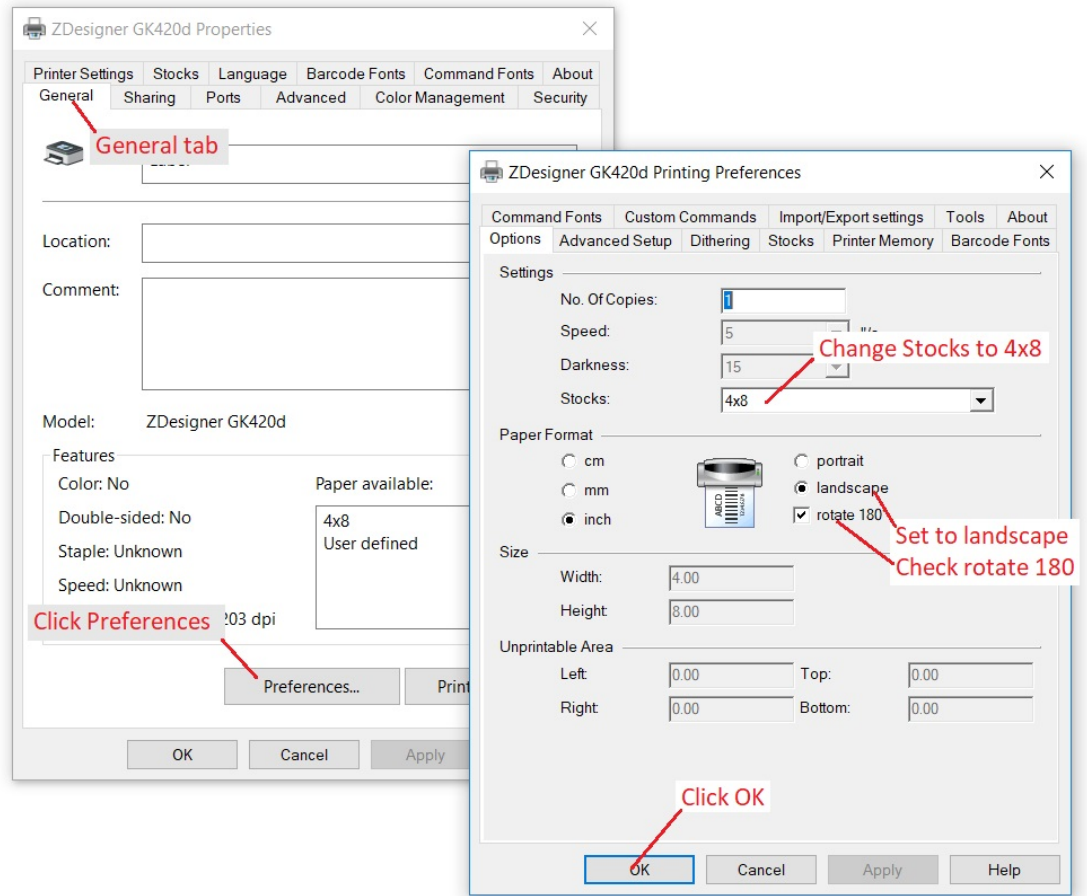
7) Change the printer's name to be Label.



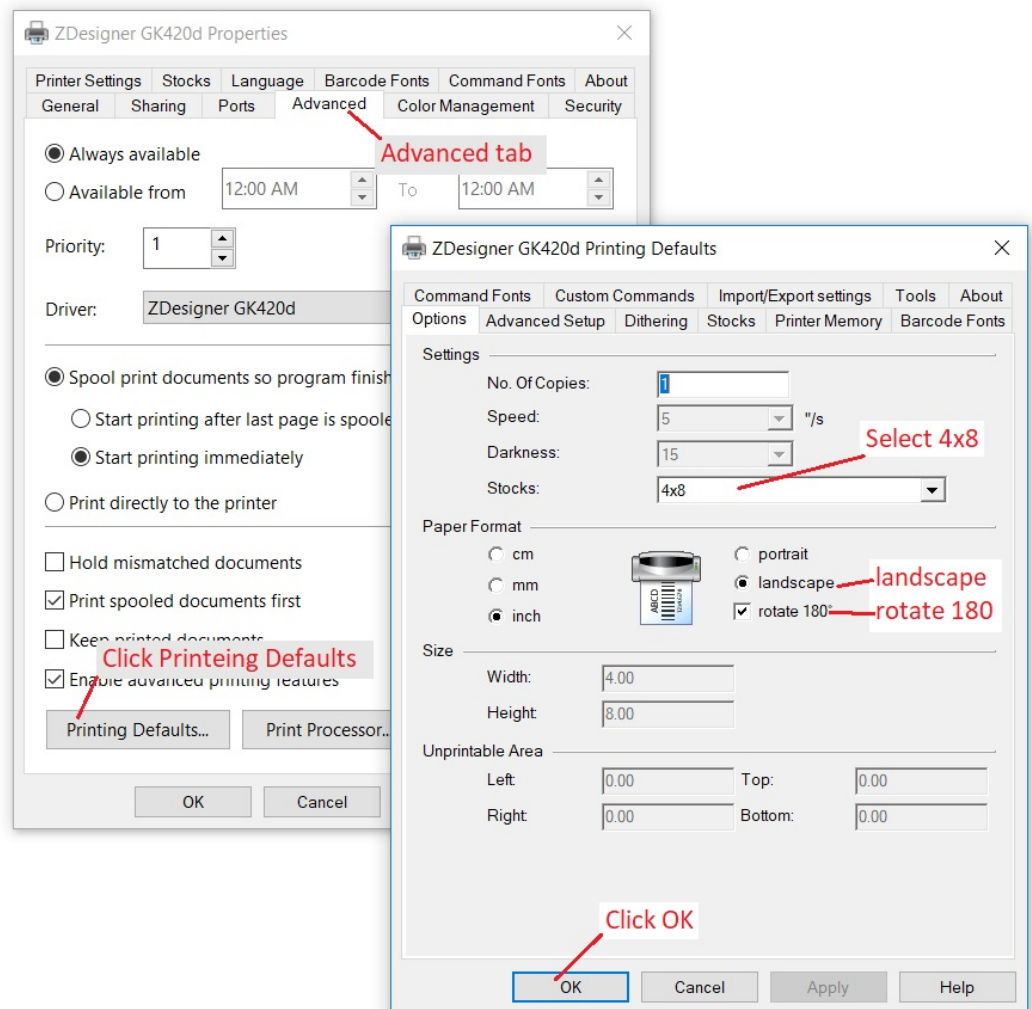
8) Go to the Stocks tab and setup the 4x8 stock.



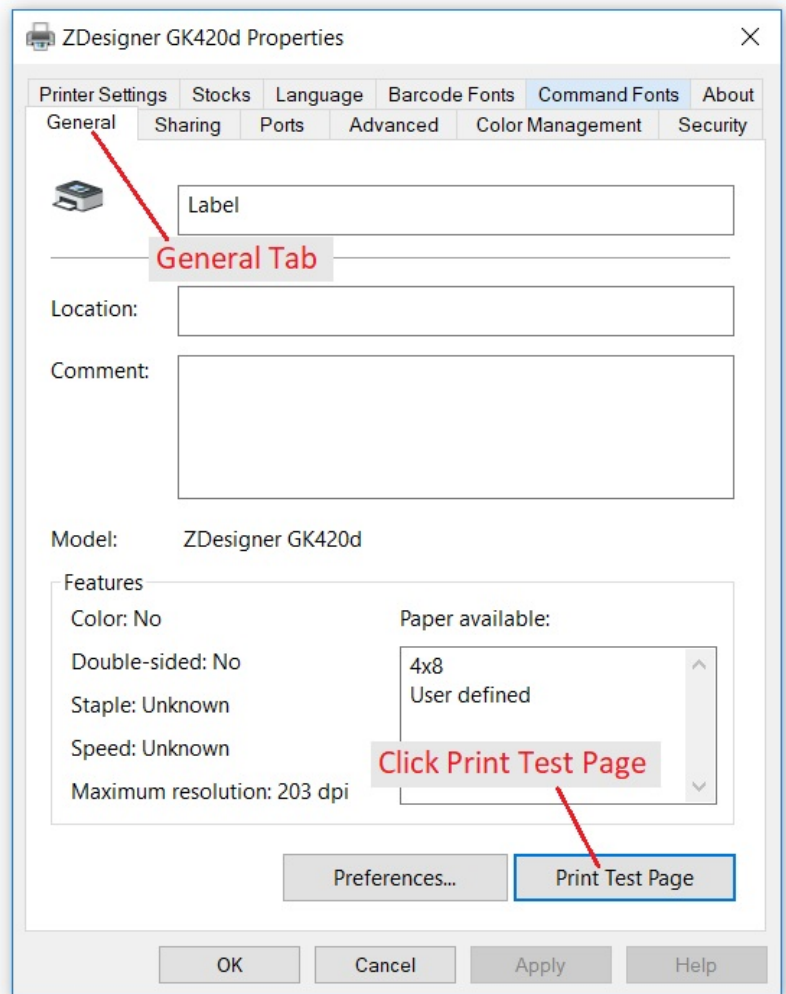
9) Set layout for the Preferences window.



10) Set layout for Printing Defaults.



11) Print Test Page.



12) Your test print should look something like this.

